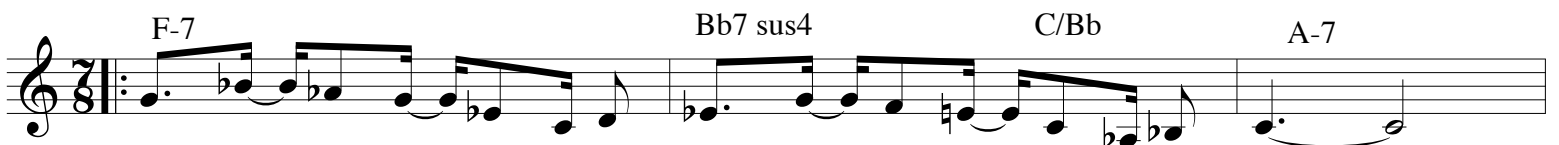
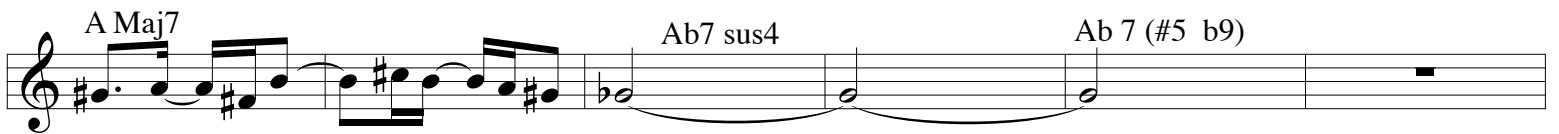
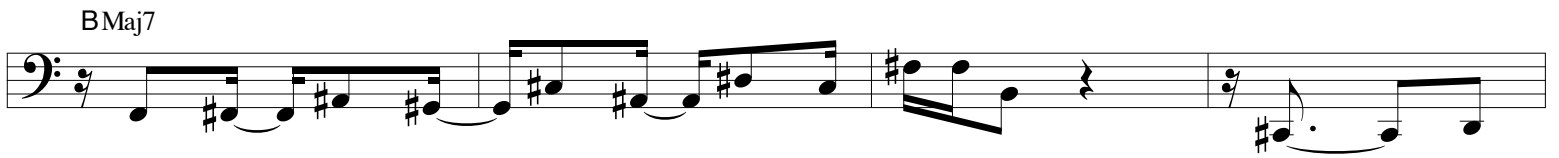
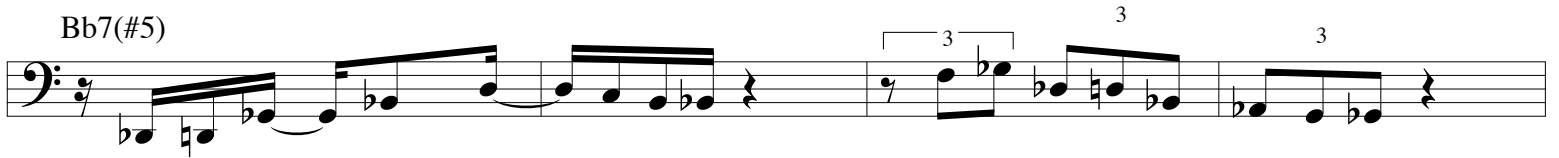


# SETEMBRO



Musical notation for the first three staves. The first staff contains the melody with chords: G m, G-Maj7, G-7, G-6, Bb-7, Eb7. The second staff continues the melody with chords: Dm7, Dm7/C, Bb Maj7, Eø7, A7, and a whole rest. The third staff continues the melody with chords: D7 sus4, D7sus4/C, Bb, Bb/A, Bb7/Ab, Eb/G, and D7/F#.

BASS SOLO

Musical notation for the Bass Solo section. It consists of a single staff with a 4/4 time signature. The first two measures are marked with Fmin7 and the last two with Dmin7. The notation uses slash marks to indicate a rhythmic pattern.

Musical notation for the Sax Solo section. It consists of a single staff with a 2/4 time signature. The notation shows chords: C#m7, F#7sus4, and F#7.

(ijexá)  
SAX SOLO

Musical notation for the Sax Solo section. It consists of a single staff with a 4/4 time signature. The notation shows chords: B Maj7, Bb 7 (#5), and A Maj7. The notation uses slash marks to indicate a rhythmic pattern.

Musical notation for the Sax Solo section. It consists of a single staff with a 4/4 time signature. The notation shows chords: Ab 7 (#5), G Maj7, and C 7 #11. The notation uses slash marks to indicate a rhythmic pattern.

Da Capo (ON CUE)

Musical notation for the Sax Solo section. It consists of a single staff with a 4/4 time signature. The notation shows chords: D7 sus4 and B7sus4. The notation uses slash marks to indicate a rhythmic pattern.